

SXYx 2 axes

● Arm type ● Whipover

Ordering method

SXYx - S

| Model | Cable | Combination | X-axis stroke | Y-axis stroke | Cable |
|-------|-------|-------------|---------------|---------------|----------|
| A1 | | | 15 to 85cm | 15 to 65cm | 3L: 3.5m |
| A2 | | | | | 5L: 5m |
| A3 | | | | | 10L: 10m |
| A4 | | | | | |

RCX320-2

| Controller / Number of controllable axes | Safety standard | Option A (OP.A) | Option B (OP.B) | Vision System | Absolute battery |
|--|-----------------|-----------------|-----------------|---------------|------------------|
|--|-----------------|-----------------|-----------------|---------------|------------------|

Specify various controller setting items. RCX320 ▶ **P.660**

RCX222

| Controller | Usable for CE | I/O selection 1 | I/O selection 2 |
|------------|---------------|-----------------|-----------------|
|------------|---------------|-----------------|-----------------|

Specify various controller setting items. RCX222 ▶ **P.670**

Specification

| | X-axis | Y-axis |
|--|----------------------------|----------------|
| Axis construction <small>Note 1</small> | F14H | F14 |
| AC servo motor output (W) | 200 | 100 |
| Repeatability <small>Note 2</small> (mm) | +/-0.01 | +/-0.01 |
| Drive system | Ball screw φ15 | Ball screw φ15 |
| Ball screw lead <small>Note 3</small> (Deceleration ratio) (mm) | 20 | 20 |
| Maximum speed <small>Note 4</small> (mm/sec) | 1200 | 1200 |
| Moving range (mm) | 150 to 850 | 150 to 650 |
| Robot cable length (m) | Standard: 3.5 Option: 5,10 | |

Note 1. Use caution that the flame machining (installation holes, tap holes) differs from single-axis robots.
 Note 2. Positioning repeatability in one direction.
 Note 3. Leads not listed in the catalog are also available. Contact us for details.
 Note 4. When the X-axis stroke is longer than 750mm, resonance of the ball screw may occur depending on the operation conditions (critical speed). In this case, reduce the speed setting on the program by referring to the maximum speeds shown in the table below.

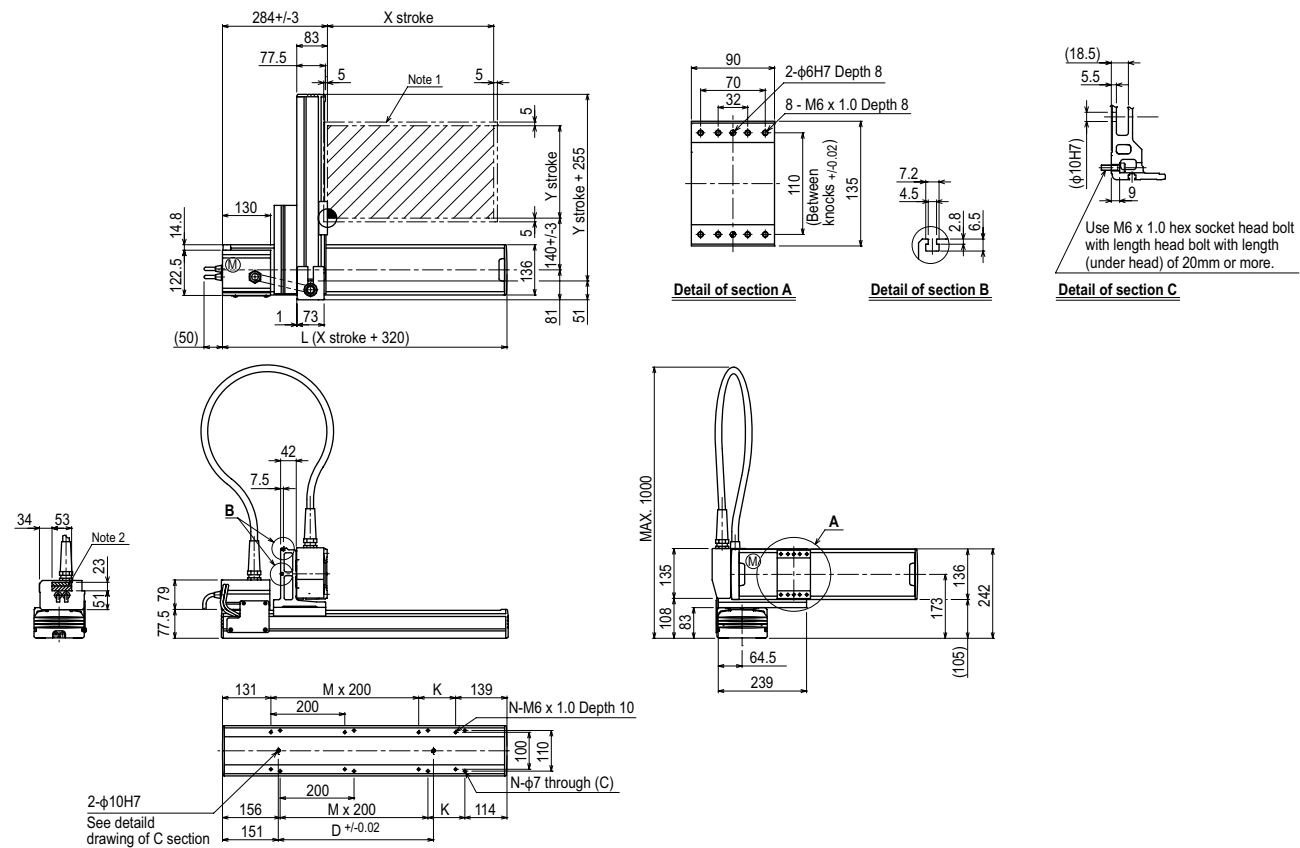
Maximum payload (kg)

| Y stroke (mm) | XY 2 axes |
|---------------|-----------|
| 150 | 20 |
| 250 | 17 |
| 350 | 15 |
| 450 | 13 |
| 550 | 11 |
| 650 | 9 |

Controller

| Controller | Operation method |
|------------|--|
| RCX320 | Programming / I/O point trace / Remote command / Operation using RS-232C communication |
| RCX222 | |

SXYx 2 axes A1

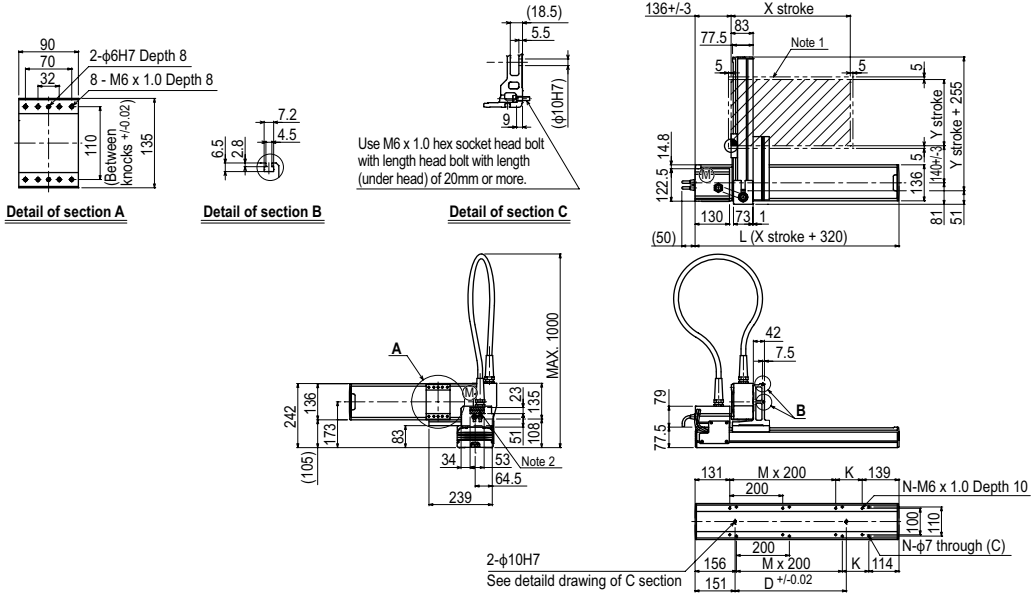


| X stroke | 150 | 250 | 350 | 450 | 550 | 650 | 750 | 850 |
|---|---------------|-----|------|-----|-----|-----|------|------|
| L | 470 | 570 | 670 | 770 | 870 | 970 | 1070 | 1170 |
| K | 200 | 100 | 200 | 100 | 200 | 100 | 200 | 100 |
| D | 240 | 240 | 420 | 420 | 600 | 600 | 780 | 960 |
| M | 0 | 1 | 1 | 2 | 2 | 3 | 3 | 4 |
| N | 4 | 6 | 6 | 8 | 8 | 10 | 10 | 12 |
| Y stroke | 150 | 250 | 350 | 450 | 550 | 650 | | |
| Maximum speed for each stroke (mm/sec) <small>Note 3</small> | X-axis | | 1200 | | | | 960 | 780 |
| | Speed setting | | - | | | | 80% | 65% |

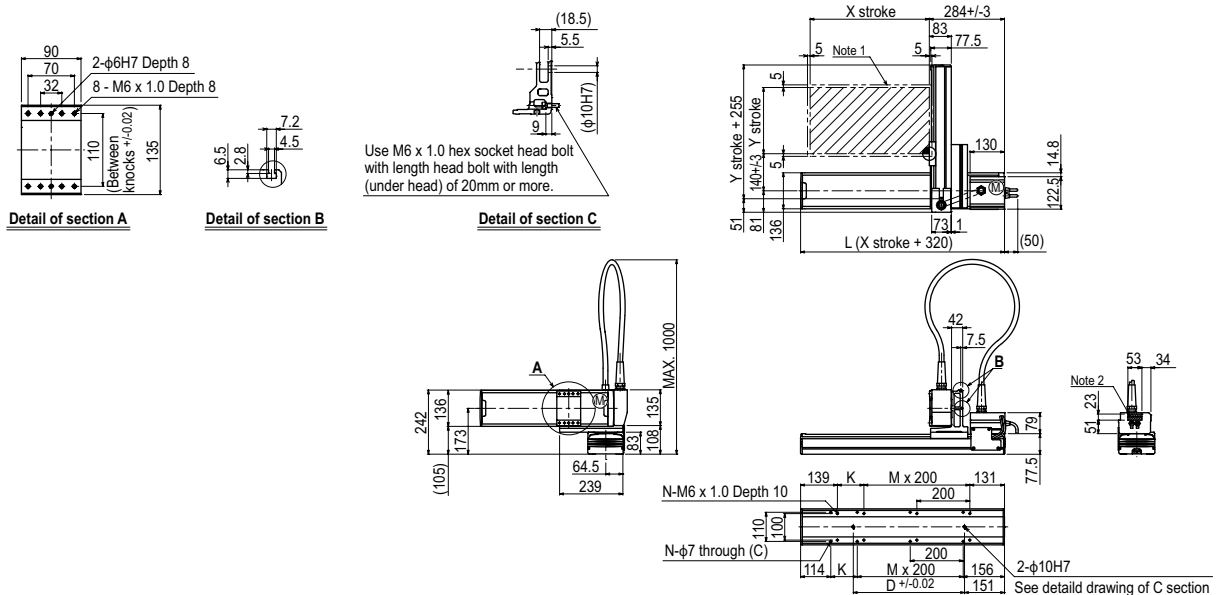
Note 1. The moving range when returning to origin and the stop position when stopping by the mechanical stopper.
 Note 2. The shaded position indicates an user cable extraction port.
 Note 3. When the X-axis stroke is longer than 750mm, resonance of the ball screw may occur depending on the operation conditions (critical speed). In this case, reduce the speed setting on the program by referring to the maximum speeds shown in the table at the left.

- Articulated robots **YA**
- Linear conveyor modules **LCM**
- Single-axis robots **CX**
- Motor-less single-axis actuator **Robonity**
- Compact single-axis robots **TRANSERO**
- Single-axis robots **FLIP-X**
- Linear motor single-axis robots **PHASER**
- Cartesian robots **XY-X**
- SCARA robots **YK-X**
- Pick & place robots **YP-X**
- CLEAN
- CONTROLLER
- INFORMATION
- Arm type
- Gantry type
- Moving arm type
- Pole type
- XZ type

SXYx 2 axes **A2**



SXYx 2 axes **A3**



SXYx 2 axes **A4**

