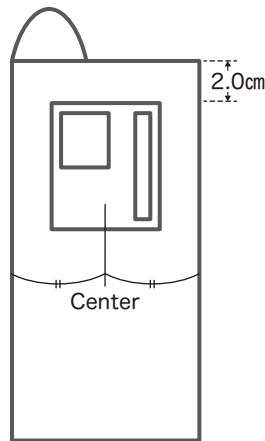
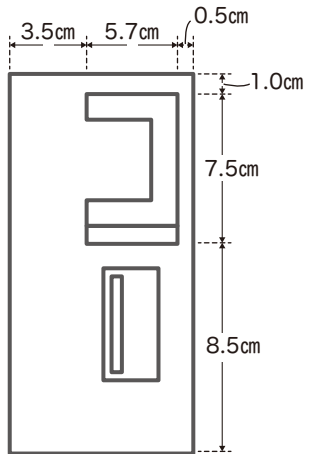
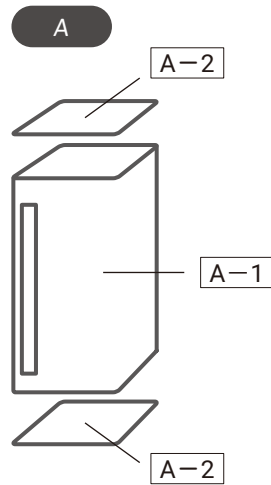
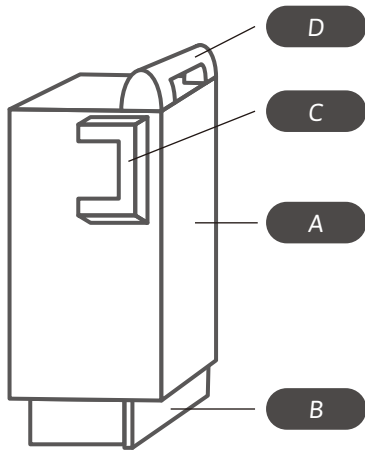


Main body

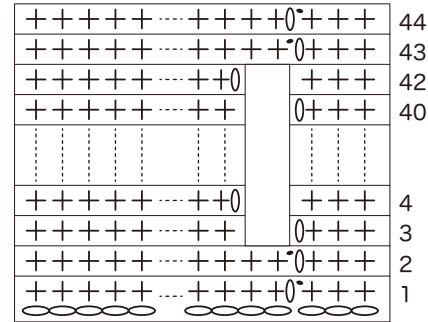


A

A-1 10 ply: black (white) 1 with a 5/0 hook

Rows	Stitches
44	74
43	74(+2)
42	72
41	72
⋮	⋮
4	72
3	72(-2)
2	74
1	74

*Circle starter stitch at ch74



Each face of A : reference photo



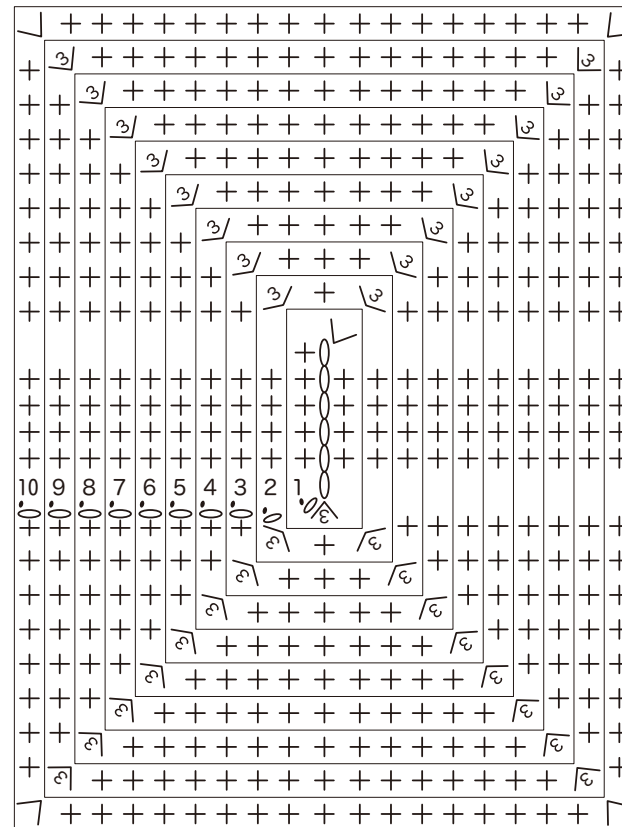
From the front

From the back

A-2 10 ply: black (white) 2 with a 5/0 hook

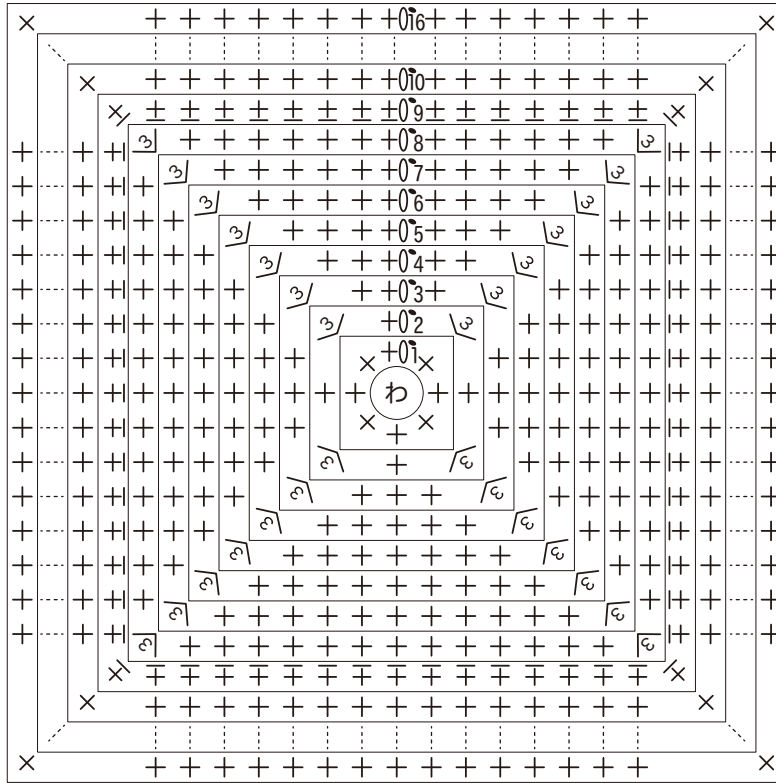
Rows	Stitches
10	82(+4)
9	78(+8)
8	70(+8)
7	62(+8)
6	54(+8)
5	46(+8)
4	38(+8)
3	30(+8)
2	22(+8)
1	14

*Ch6 starter stitch



B 10 ply: black (white) 1 with a 5/0 hook

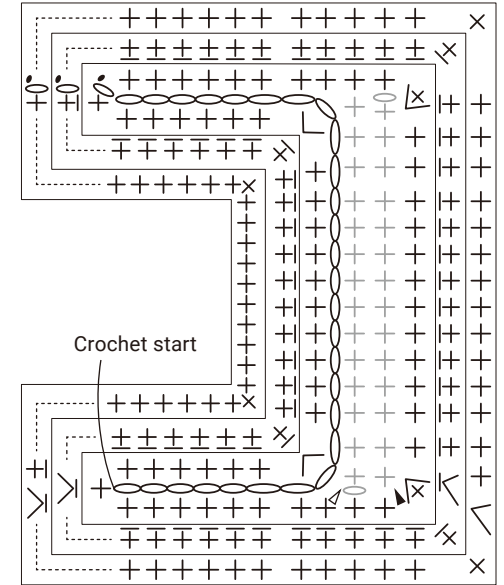
Rows	Stitches
16	64
⋮	⋮
10	64
9	64 *bpsc
8	64(+8)
7	56(+8)
6	48(+8)
5	40(+8)
4	32(+8)
3	24(+8)
2	16(+8)
1	8



C 10 ply: black (white) 1 with a 5/0 hook

Rows	Stitches
3	68(+2)
2	66(+2) *bpsc
1	64

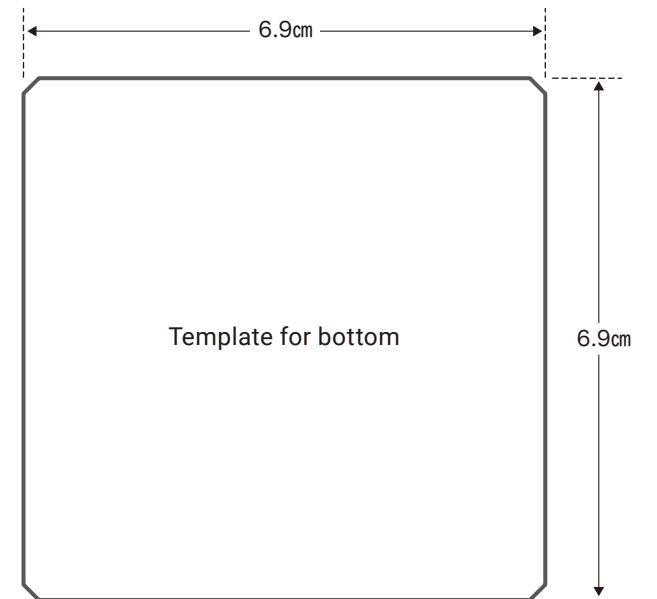
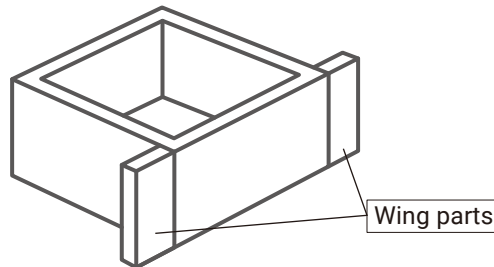
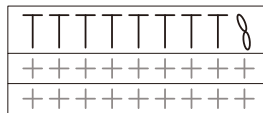
*Ch28 starter stitch



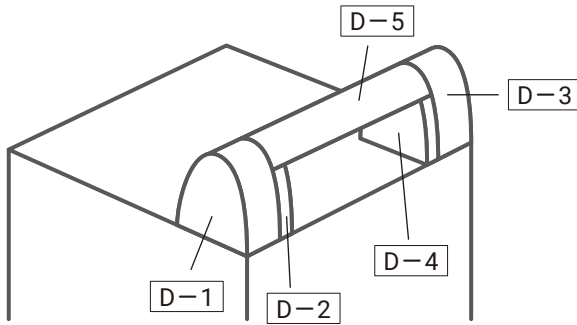
Wing parts 10 ply: black (white) 2 with a 5/0 hook

Rows	Stitches
1	9

*Crochet to the corner of **B**



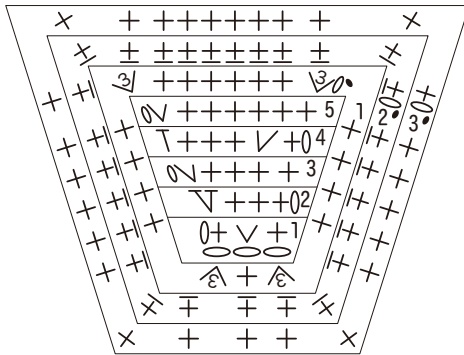
D



D-1 10 ply: black (white) 1 with a 5/0 hook

Rows	Stitches
Edge1	27
Edge2	27 *bpsc
Edge3	27
5	8(+1)
4	7(+1)
3	6(+1)
2	5(+1)
1	4

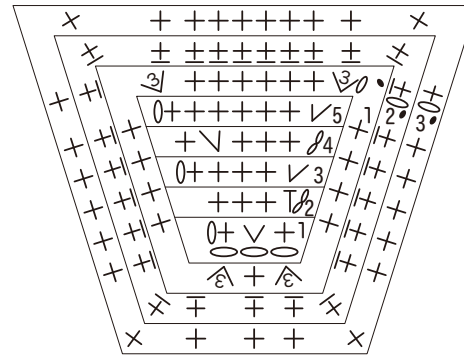
*Ch3 starter stitch



D-3 10 ply: black (white) 1 with a 5/0 hook

Rows	Stitches
Edge1	27
Edge2	27 *bpsc
Edge3	27
5	8(+1)
4	7(+1)
3	6(+1)
2	5(+1)
1	4

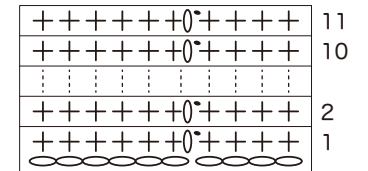
*Ch3 starter stitch



D-5 10 ply: black (white) 1 with a 5/0 hook

Rows	Stitches
11	10
∴	∴
1	10

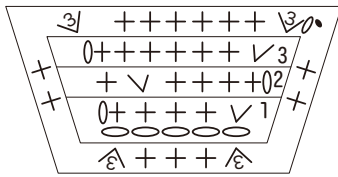
*Ch11 starter stitch



D-2 10 ply: black (white) 1 with a 5/0 hook

Rows	Stitches
Edge	25
3	8(+1)
2	7(+1)
1	6

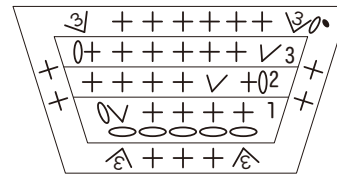
*Ch5 starter stitch



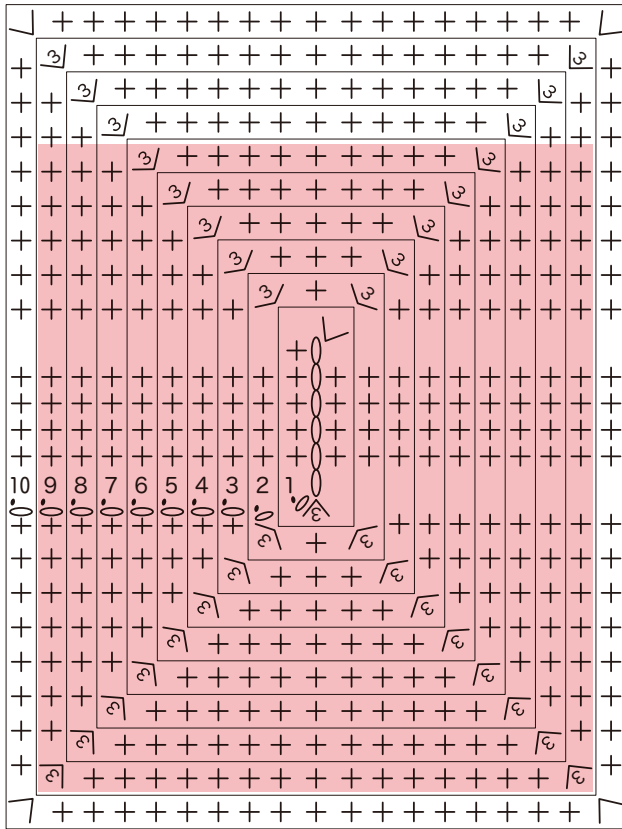
D-4 10 ply: black (white) 1 with a 5/0 hook

Rows	Stitches
Edge	25
3	8(+1)
2	7(+1)
1	6

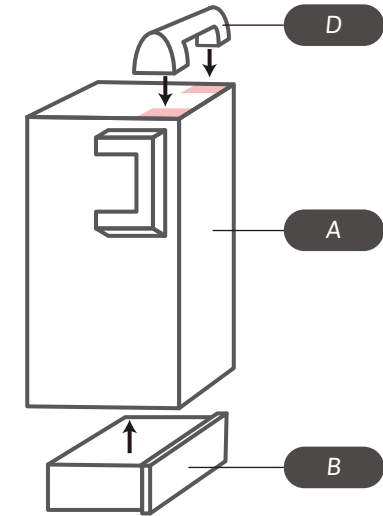
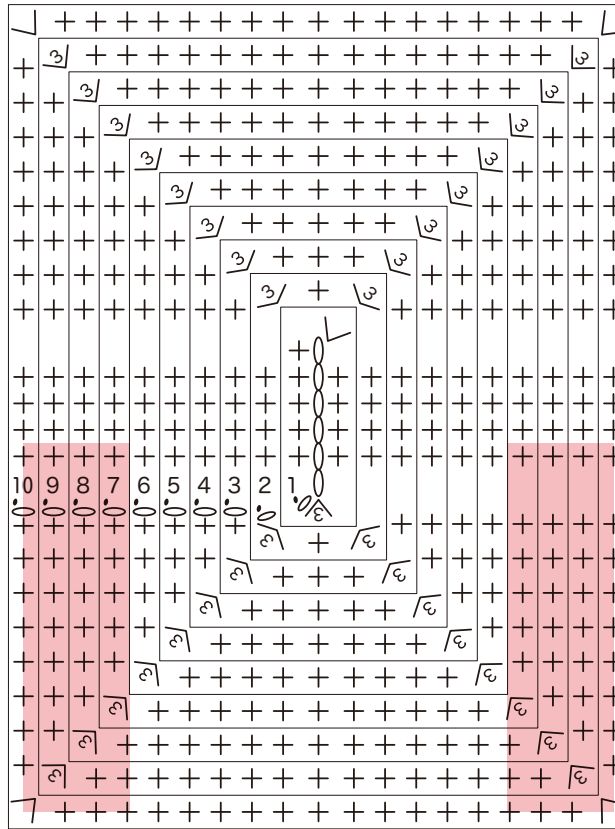
*Ch5 starter stitch



Attach B here



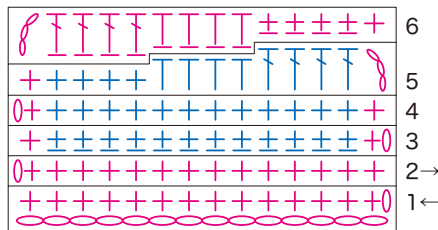
Attach D here



Indicator panel

2/0 hook

Rows	Stitches
6	14
⋮	⋮
1	14

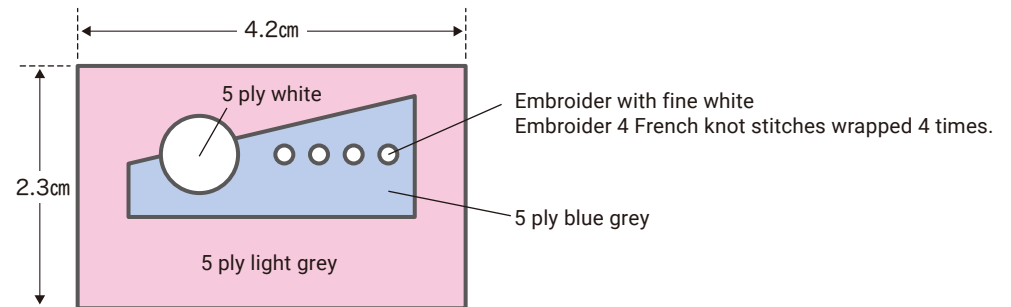
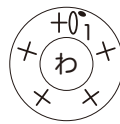


*Ch14 starter stitch
*bpsc in part of the 3rd and 6th rows

Round part

2/0 hook

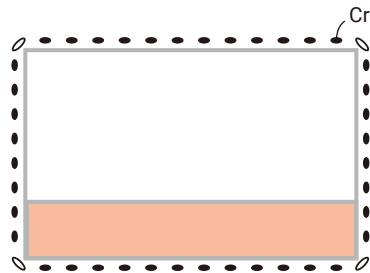
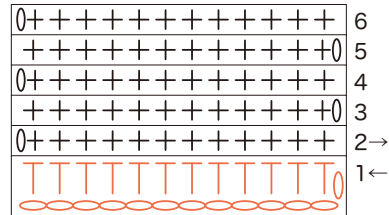
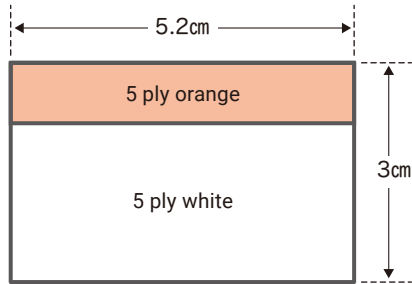
Rows	Stitches
1	5



Sticker A 4/0 hook

Rows	Stitches
6	12
⋮	⋮
1	12

*Ch12 starter stitch



Slip stitch round the whole edge in 5 ply white
Add a chain stitch on the corners.

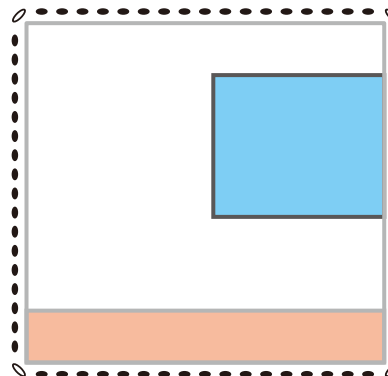
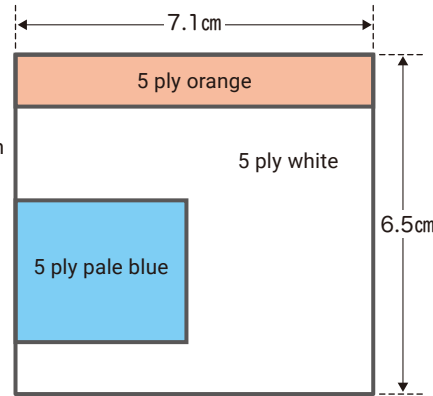


Embroidery thread (black)
Back stitch with 3 threads.

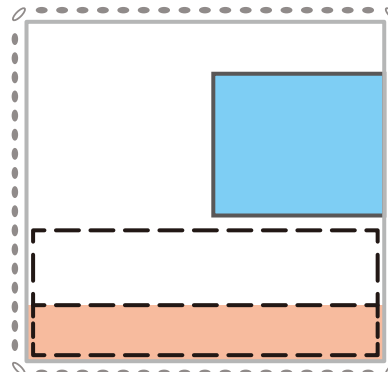
Sticker B 4/0 hook

Rows	Stitches
16	17
⋮	⋮
1	17

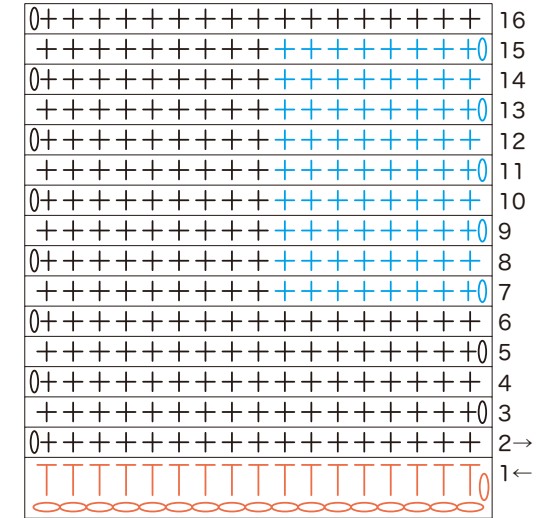
*Ch17 starter stitch



Slip stitch round the whole edge in 5 ply white
Add a chain stitch on the corners.



Embroidery thread (black)
Back stitch with 3 threads.

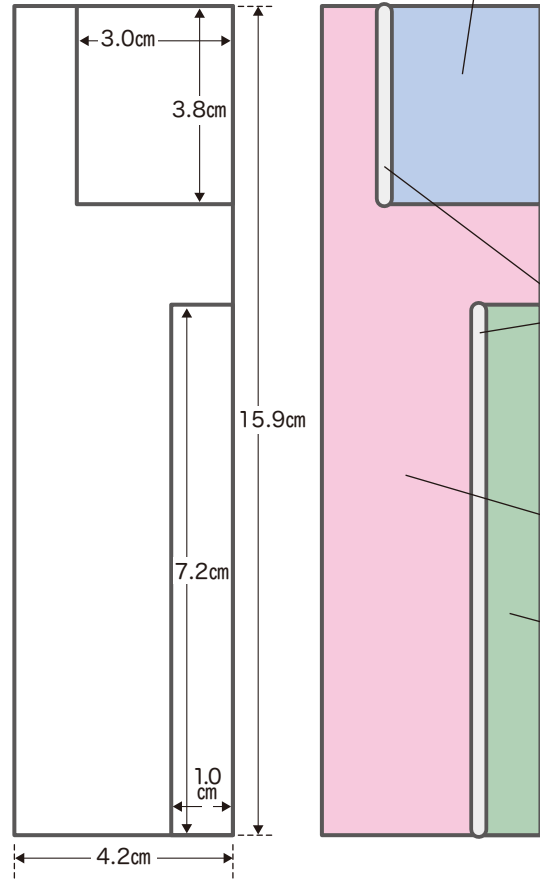
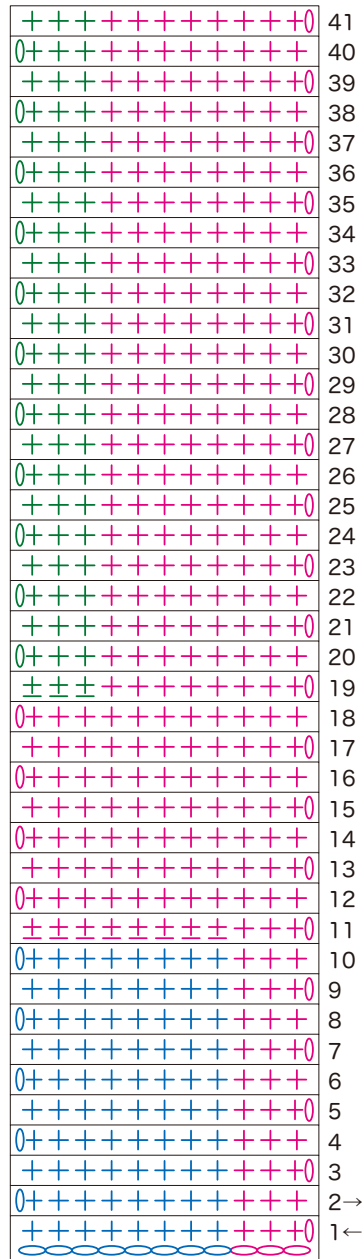


Panel A

4/0 hook

Rows	Stitches
41	11
⋮	⋮
1	11

*Ch11 starter stitch
*bpsc in part of the 11rd and 19th rows



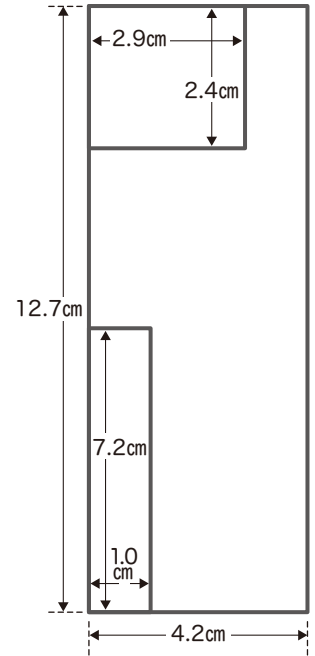
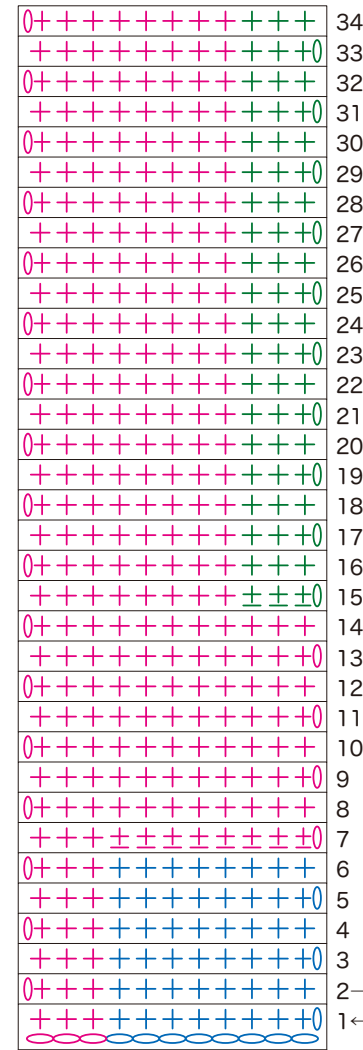
5 ply blue grey
(White main body: 5 ply grey)

Panel B

4/0 hook

Rows	Stitches
34	11
⋮	⋮
1	11

*Ch11 starter stitch
*bpsc in part of the 7rd and 15th rows



Silver chain stitch with 2 balls

5 ply light grey

5 ply grey

5 ply blue grey
(White main body: 5 ply grey)

5 ply light grey

Silver chain stitch with 2 balls

5 ply grey