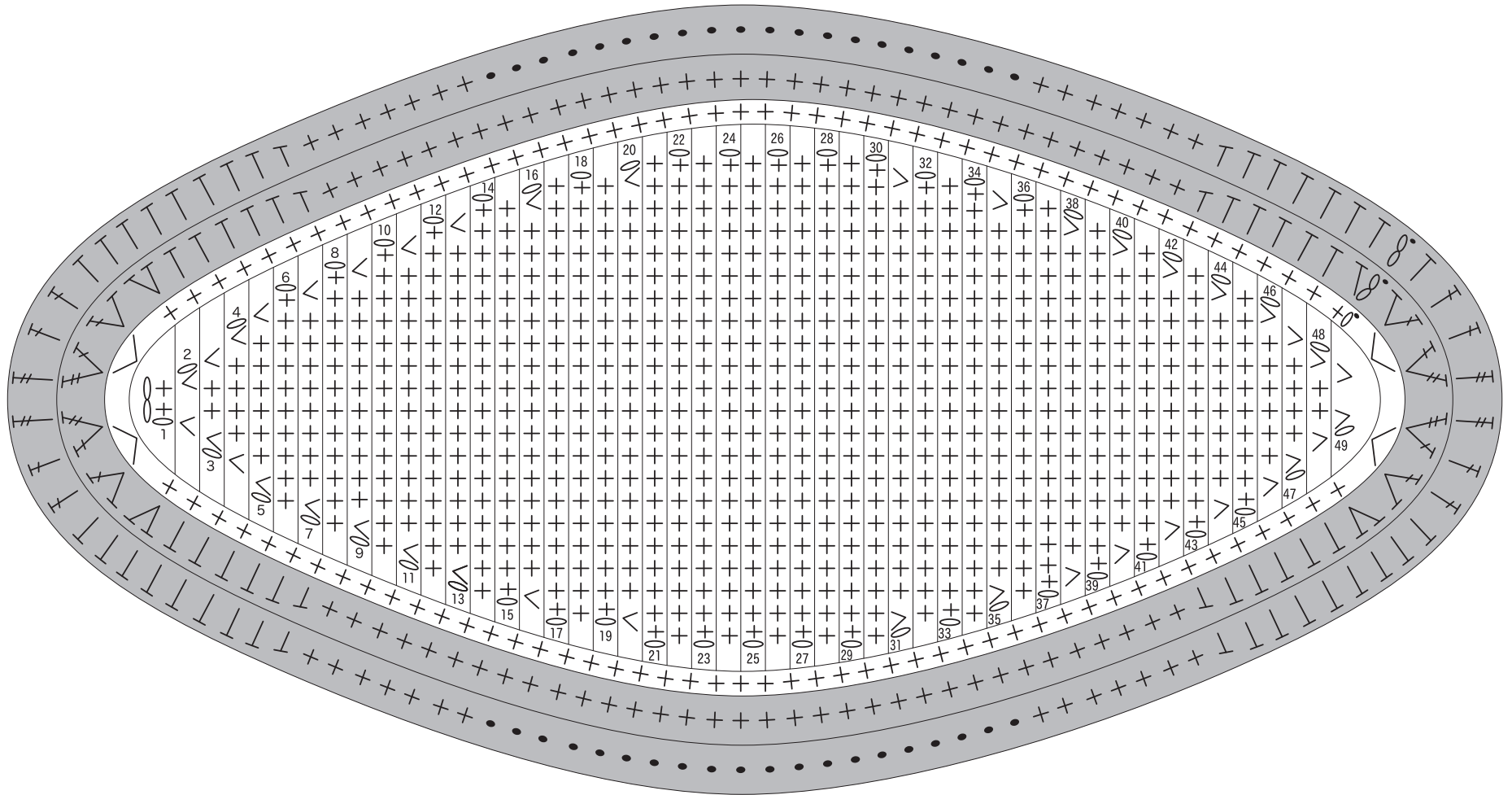


Panels

2 balls of light, hook 6/0, white × light blue 2 (1 for YAHAMA logo panel, 1 for Jubilo logo panel), white × dark blue 2 (2 for GILBERT logo panel)

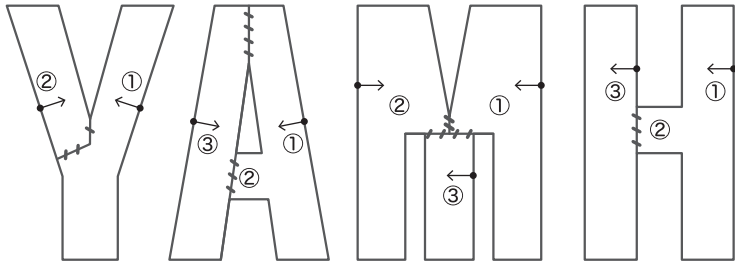
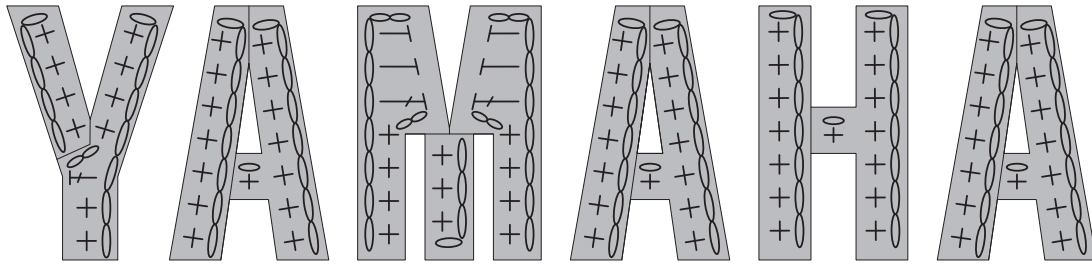
Rows	Stitches
49	2(-2)
48	4(-2)
47	6(-2)
46	8(-2)
45	10
44	10(-2)
43	12
42	12(-2)
41	14
40	14(-2)
39	16
38	16(-2)
37	18
...	...
35	18(-2)
34	20
...	...
31	20(-2)
30	22
...	...
20	22(+2)
19	20
...	...
16	20(+2)
15	18
...	...
13	18(+2)
12	16
11	16(+2)
10	14
9	14(+2)
8	12
7	12(+2)
6	10
5	10(+2)
4	8(+2)
3	6(+2)
2	4(+2)
1	2



※ 2nd stitch on the chain
Crochet with two balls of wool.

YAMAHA logo

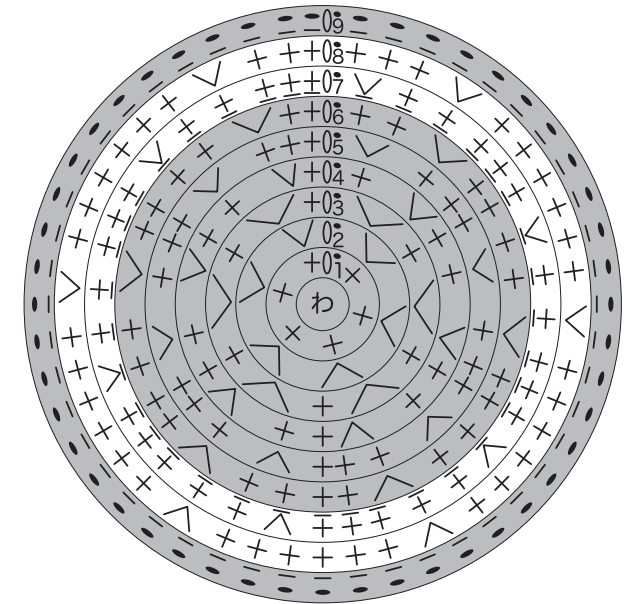
Hook 2/0, ultra light, Red



Tuning fork logo

Rows	Stitches	Colour
9	48 *	Ultra light : Red
8	48 (+6)	Ultra light : White
7	42 (+6) *	
6	36 (+6)	Ultra light : Red
5	30 (+6)	
4	24 (+6)	
3	18 (+6)	
2	12 (+6)	
1	6	

* Bpsc



Logo measurements

← 51mm →

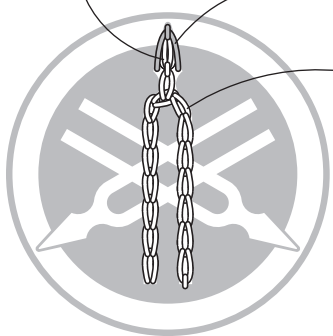


Apply the tuning fork logo

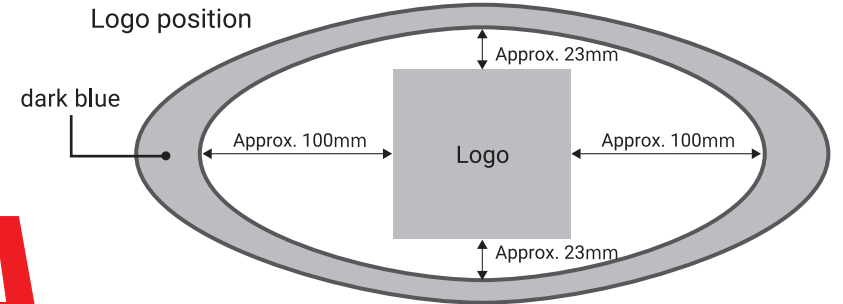
② Double lazy daisy stitch (ultra light, white)

③ Fly stitch (ultra light, red)

① Chain stitch (ultra light, white)



Logo position

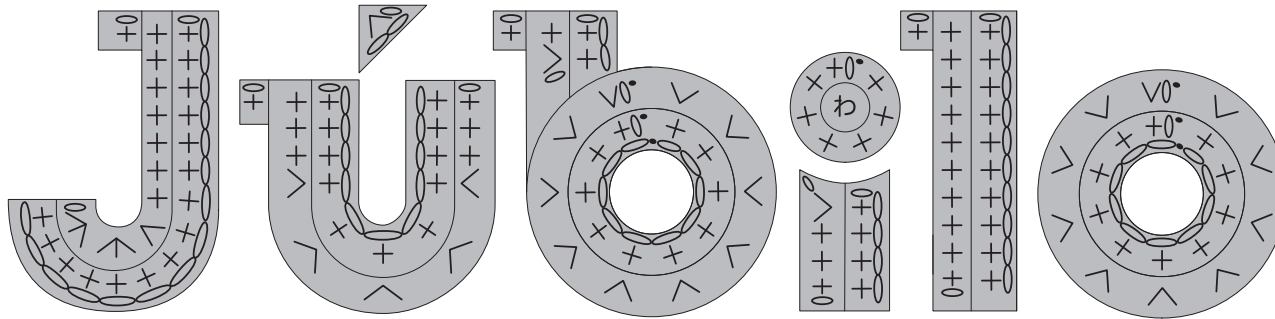


YAMAHA

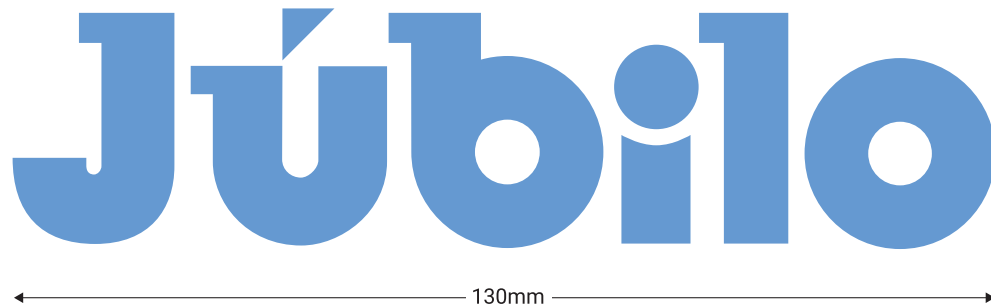
← 84mm →

Jubilo logo

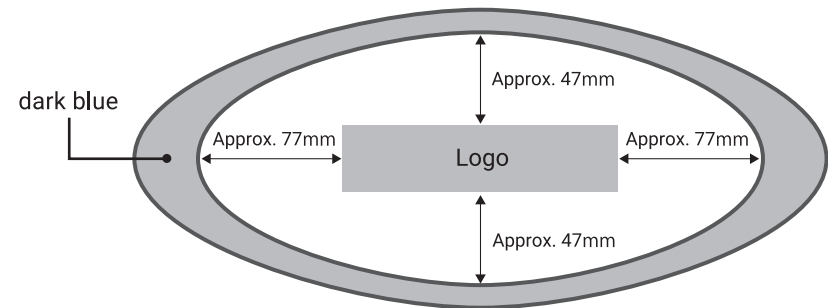
Hook 3/0, light, light blue



Logo measurements

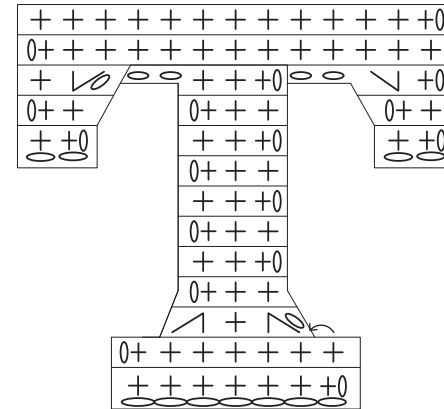
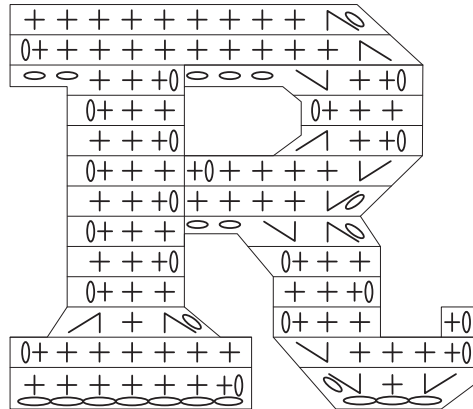
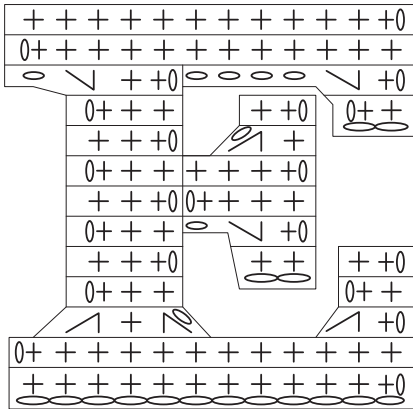
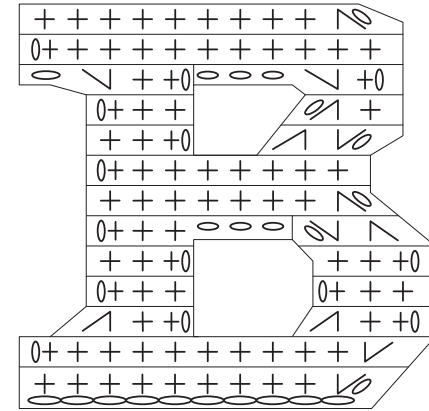
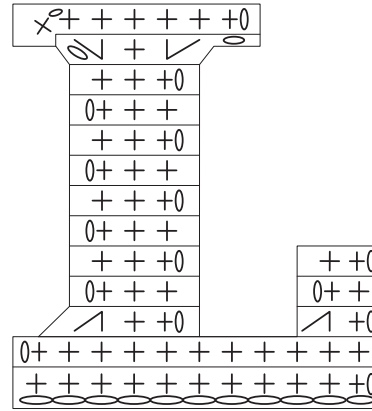
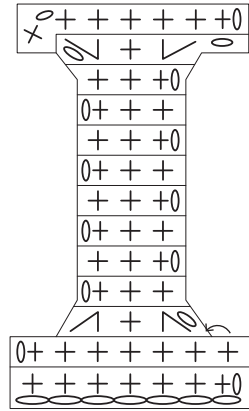
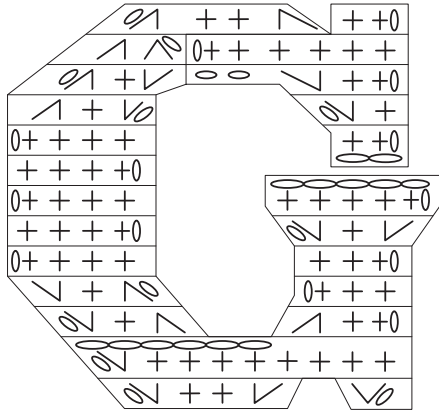


Logo position

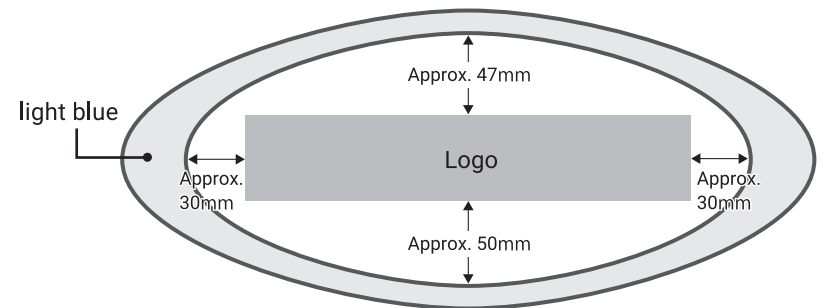


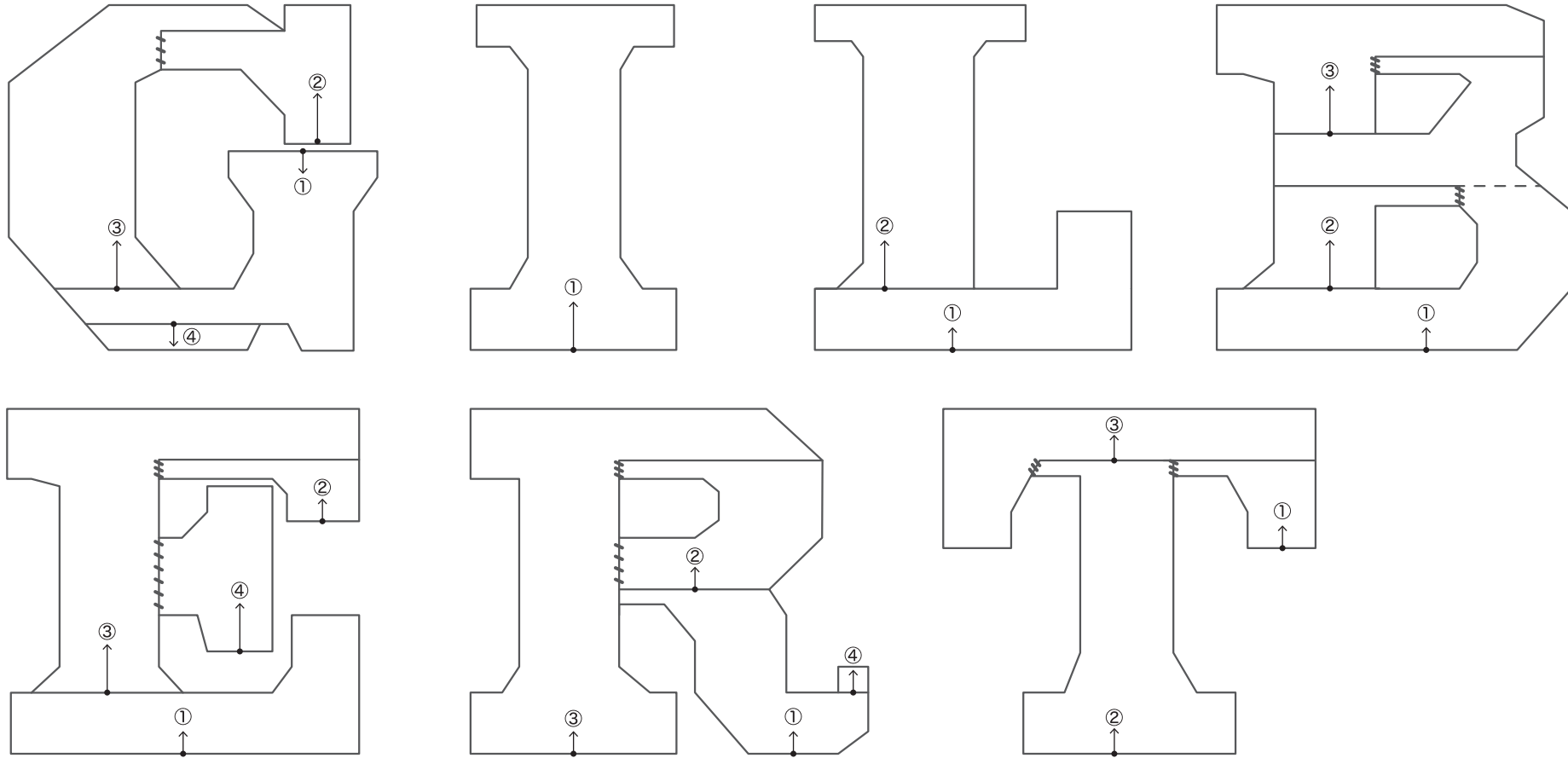
GILBERT logo

Hook 2/0, ultra light, black, two of each



Logo position





Logo measurements

GILBERT

← 224mm →

